

Are Washington Circle Performance Measures Associated With Decreased Criminal Activity Following Treatment?

Deborah W. Garnick
Constance M. Horgan
Margaret T. Lee
Lee Panas
Grant A. Ritter

Tracy Leeper
Steve Davis
Becki Moore
Mark Reynolds

**Institute for Behavioral Health,
Heller School for Social Policy
and Management,
Brandeis University**



**Oklahoma Department of
Mental Health and Substance
Abuse Services (ODMHSAS)**

Oklahoma Department of Mental Health
and Substance Abuse Services

First Annual NIATx Summit -- San Antonio Texas – April 24, 2007

Supported by: NIAAA (Grant #R21 AA14229), NIDA (Grant #R21 DA15704), and SAMHSA through a supplement to the Brandeis/Harvard NIDA Center on Managed Care and Drug Abuse Treatment (Grant #3 P50 DA010233)

KEY RESEARCH QUESTIONS

- Is there an association between clients meeting the Washington Circle specifications for amount and timing of substance abuse treatment services and decreased criminal justice activity?
- How can information on this question be useful for state decision making?

OVERVIEW OF PRESENTATION

- Background
 - Washington Circle Performance Measures
 - Oklahoma use of measures in regional performance reports
 - Importance of the research question
- Data and analytic methods
- Results
- Using the results to influence state policy

WASHINGTON CIRCLE: HISTORY

- Convened in 1998 by SAMHSA's Center for Substance Abuse Treatment
- Goals:
 - Develop and pilot test performance measures for substance abuse treatment
 - Promote adoption of these measures by public and private stakeholders (McCorry et al 2000)
- Brandeis works with WC to develop and test performance measures -- beginning with commercial managed care plans (Garnick et al 2002)
- NCQA adopts measures in 2003
- Oklahoma adapts two measures for regional reports in 2003
- Formation of the WC Public Sector Workgroup in 2004

WC PUBLIC SECTOR WORKGROUP MEMBERS

Teresa Anderson, Ph.D.
Andrew Hanchett, M.P.H.
Massachusetts Department of Public Health

Charles Bartlett, MSW
Kansas Social and Rehabilitation Services

Astrid Beigel, Ph.D.
County of Los Angeles, Department of Mental
Health

Minakshi Tikoo, Ph.D.
Alfred Bidorini
Michael J. Hettinger
Connecticut Dept. of Mental Health and
Addiction Services

Kevin Campbell, Ph.D.
Washington State Division of Alcohol and
Substance Abuse

Maria Canfield
Brad Towle, MA, MPA
Nevada State Health Division

Doreen A. Cavanaugh, Ph.D.
Georgetown University Public Policy Institute

Mady Chalk, Ph.D.
A. Thomas McLellan, Ph.D.
Treatment Research Institute

Barbara A. Cimaglio
Vermont Department of Health

Spencer Clark, ACSW
Adam Holtzman
North Carolina Department of Health and Human
Services

Kay Miller
Thomson Healthcare

WC PUBLIC SECTOR WORKGROUP MEMBERS

Sarah A. Wattenberg, LCSW-C
Frances Cotter, MA, MPH
Hal Krause
Anne Herron, M.S.
CSAT/SAMHSA

Ann Doucette, Ph.D.
The George Washington University

Jay Ford, Ph.D
Network for the Improvement of Addiction
Treatment

Frank McCorry, Ph.D
Robert J. Gallati, M.A.
Dawn Lambert-Wacey, M.A.
New York State Office of Alcoholism and
Substance Abuse Services

Craig Anne Heflinger, Ph.D.
Robert Saunders, M.P.P.
Vanderbilt University

Keith Humphreys, Ph.D.
VA Palo Alto Health Care System

Jack Kemp, M.S.
Delaware Health and Social Services

Steve Davis, Ph.D
Mark Reynolds, Ed.D.
Tracy Leeper, M.A.
Oklahoma Department of Mental Health and
Substance Abuse Services

Kathleen Nardini
National Association of Alcohol and Drug Abuse
Directors

Melissa Lahr Thomas, M.Ed.
Meena Shahi
Arizona Department of Health Services

Constance Weisner, Dr. P.H., MSW
University of California, San Francisco
Kaiser Permanente

FOUR DOMAINS – CONTINUUM OF CARE

- 1. Prevention/Education** -- Activities to raise the awareness of substance abuse as a major debilitating disorder affecting individuals, families, and society
- 2. Recognition** -- Efforts at case-finding, including: screening, assessment, and referral
- 3. Treatment** – Activities associated with rehabilitation of individuals who have an alcohol or other drug disorder diagnosis
- 4. Maintenance** -- Activities related to sustaining long-term positive outcomes

THREE COMMERCIAL MANAGED CARE MEASURES

- **Identification** -- Percent of adults in the enrolled population with a SA service on an annual basis.
- **Initiation** -- Percent of adults with a new episode of a SA outpatient service and any additional SA services within 14 days.
- **Engagement** -- Percent of adults that become initiated and receive two additional AOD services within 30 days of the initiation of care.

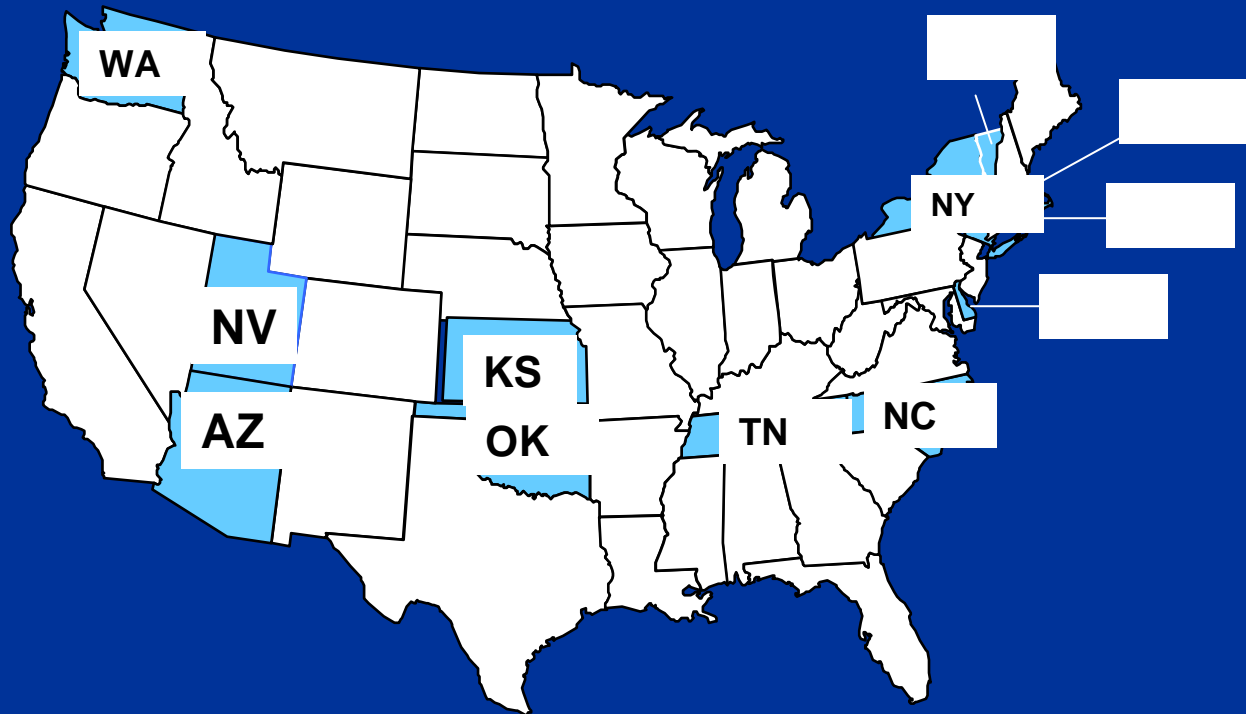
Example Outpatient Initiation and Engagement

Days

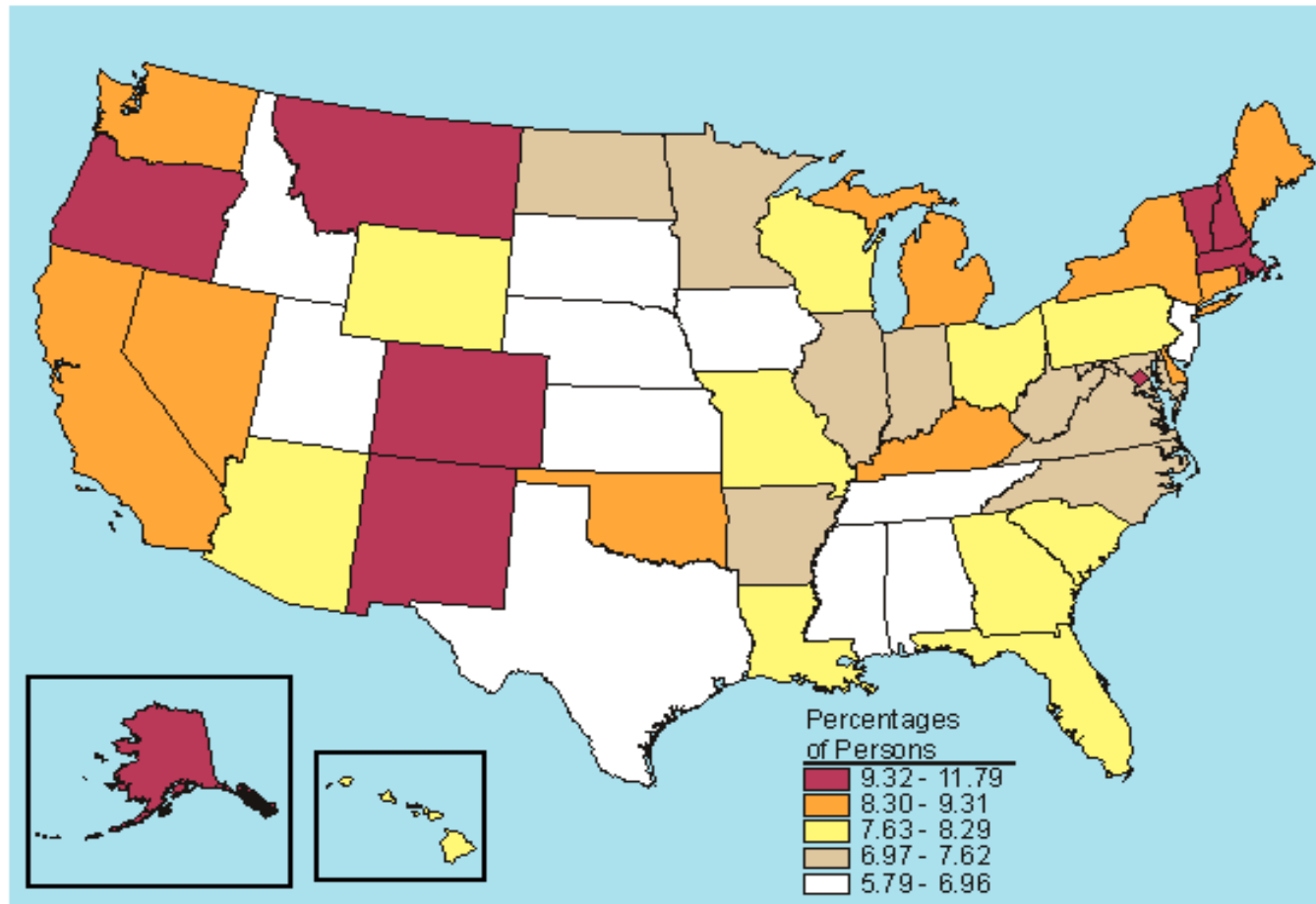
Example Initiation Only

Days

WC PUBLIC SECTOR WORKGROUP PARTICIPANT STATES



ANY ILLICIT DRUG USE IN PAST MONTH AMONG PERSONS AGED 12 OR OLDER, BY STATE: PERCENTAGES, ANNUAL AVERAGES BASED ON 2003 AND 2004 NSDUHS



GOALS OF WC PUBLIC SECTOR WORKGROUP

- Improve delivery of substance abuse treatment services in public sector at state level
- Adapt WC performance measures for use in states for continuous quality monitoring
- Common approach among states

TRANSLATING THESE MEASURES FOR PUBLIC SECTOR APPLICATIONS – OPPORTUNITIES AND CHALLENGES

- Opportunities

- Importance of public sector in treatment of substance use disorders
- Current interest in performance measurement
- More detail about types of services

- Challenges

- No enrolled population
- Variability in states' data reporting capabilities
- Data completeness influenced by some clients' multiple funding sources, e.g., state agency & Medicaid
- More detail about types of services

REVISIONS TO SPECIFICATIONS – EXPANDED TO TEN MEASURES

1. Identification
2. Initiation after Outpatient
3. Engagement after Outpatient
4. Initiation after Intensive Outpatient
5. Engagement after Intensive Outpatient
6. Continuity of care after Assessment Service
7. Continuity of care after Detoxification
8. Continuity of care after Short-term Residential
9. Continuity of care after Long-term Residential
10. Continuity of care after Inpatient

WC/NIATx Comparison

- **WC Initiation** = percent of clients, who have an index* outpatient service with no other SA services in the previous 60 days and received a second SA service (other than detox or crisis care) within 14 days after the index service
- **WC Engagement** = percent of clients who initiated outpatient substance abuse treatment and received two additional services within 30 days after initiation
- **WC Continuity of care** = percent of clients with an additional services within 14 days -- calculated separately for assessment, detox, residential and inpatient
- **NIATx Time from 1st request** = time from first request for service to 1st treatment unit of service post-admission.
- **NIATx Retention** = Percent clients receiving 4 units of services within 30 days of 1st day of tx.

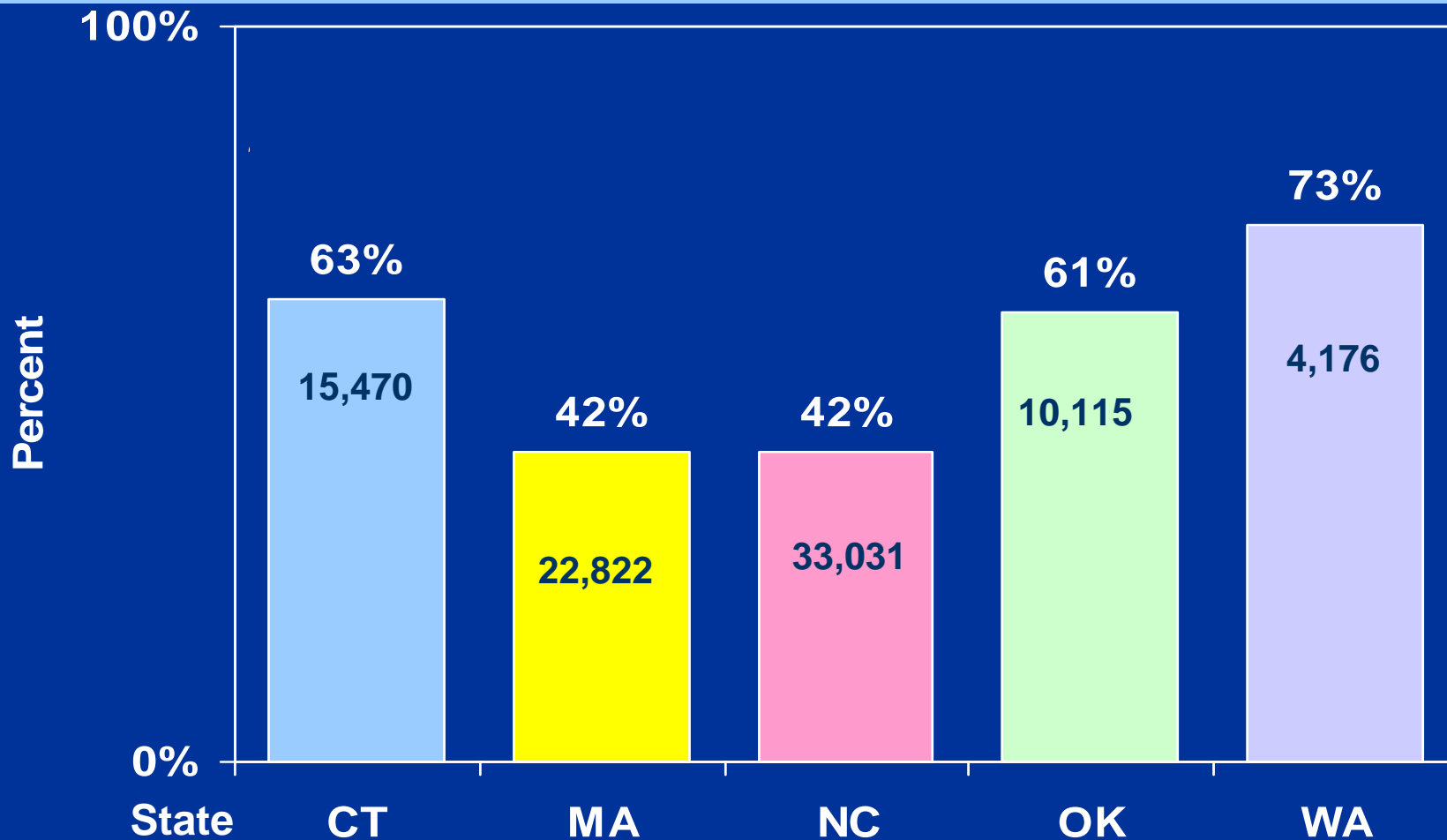
DEFINITION: OUTPATIENT INITIATION

Initiation = Individuals with an OP index* service
who received a second service** within
14 days after the index service
Individuals with an OP index service

*Index service defined as first service after a 60-day
“service-free period.” Can have assessment or detox
during service-free period.

**Not detox or crisis care

PILOT RESULTS: OUTPATIENT INITIATION



Note: Numbers in bars are denominators for measures.

DEFINITION: OUTPATIENT ENGAGEMENT

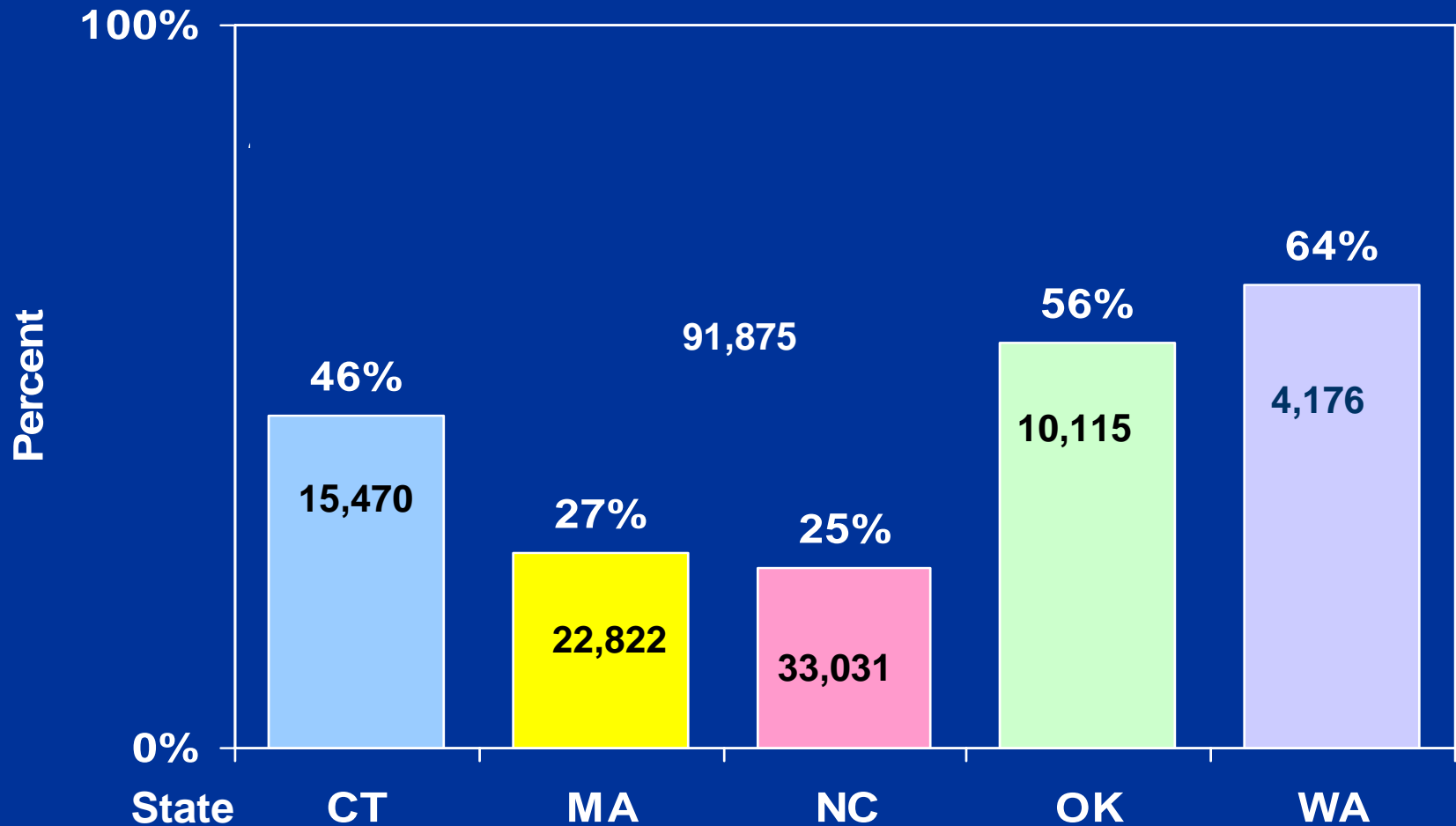
Engagement = Individuals who initiated OP SA treatment and received two additional services** within 30 days after initiation

Individuals with an OP index* service

*Index service defined as first service after a 60-day “service-free period.” Can have assessment or detox during service-free period.

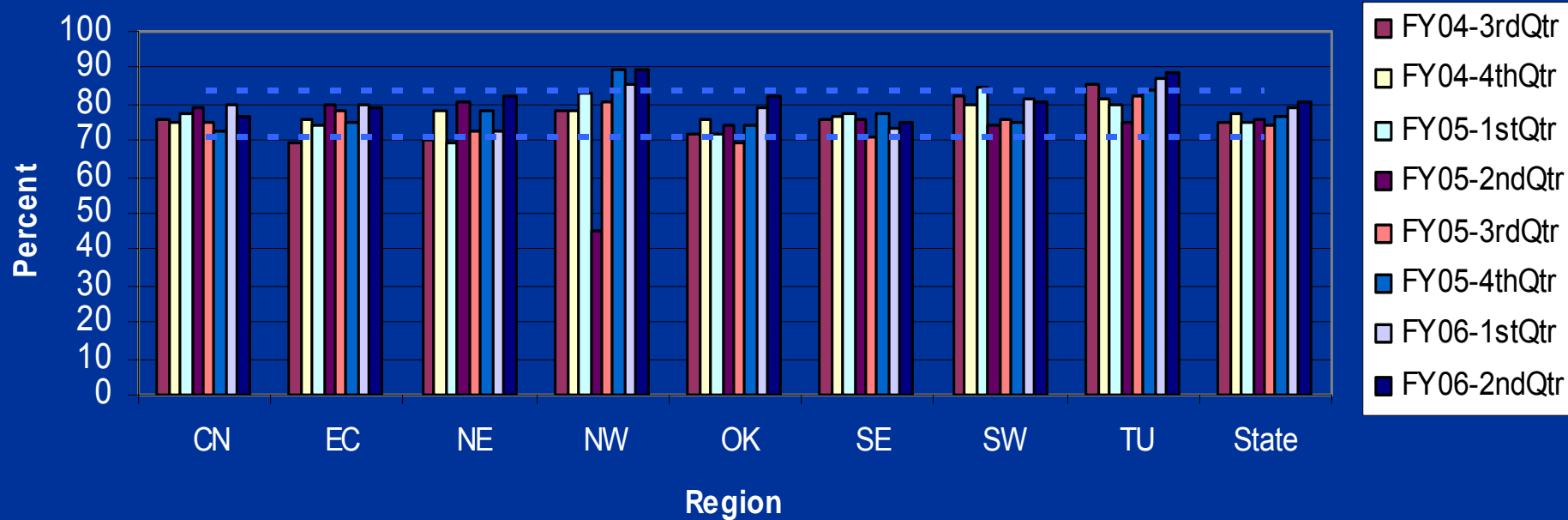
**Not detox or crisis care

PILOT RESULTS: OUTPATIENT ENGAGEMENT



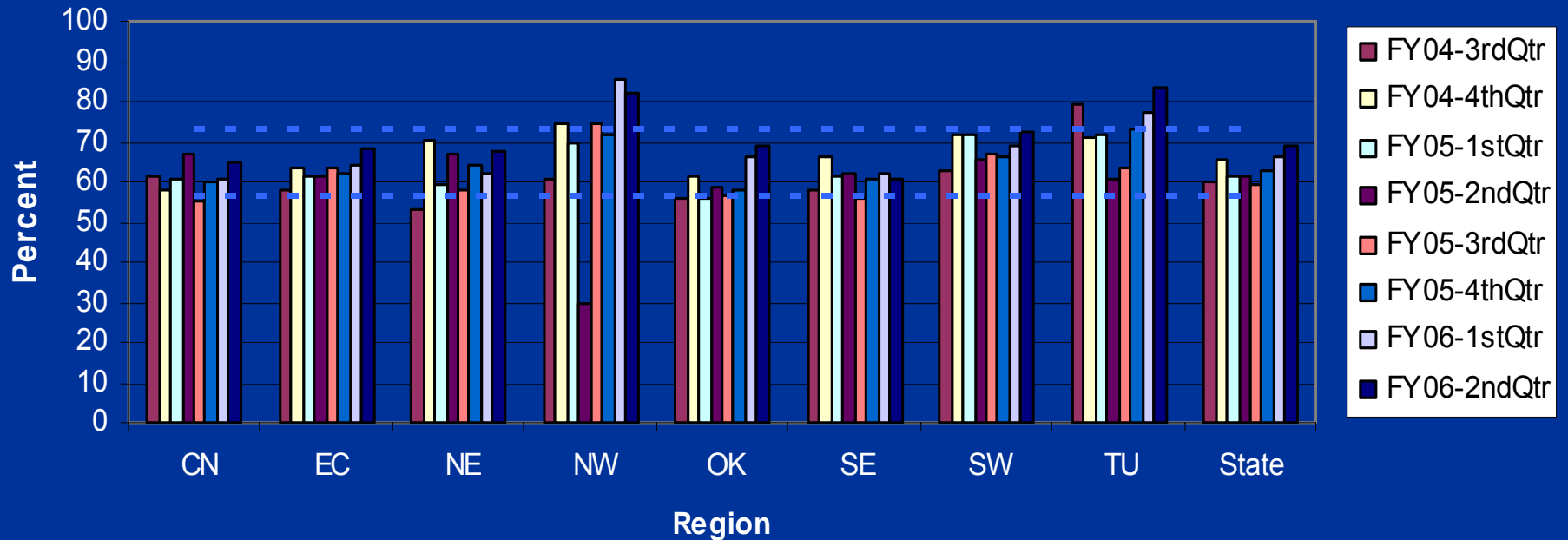
Note: Numbers in bars are denominators for measures.

OKLAHOMA – INITIATION OF S.A. TREATMENT FOLLOWING A FIRST OUTPATIENT SERVICE

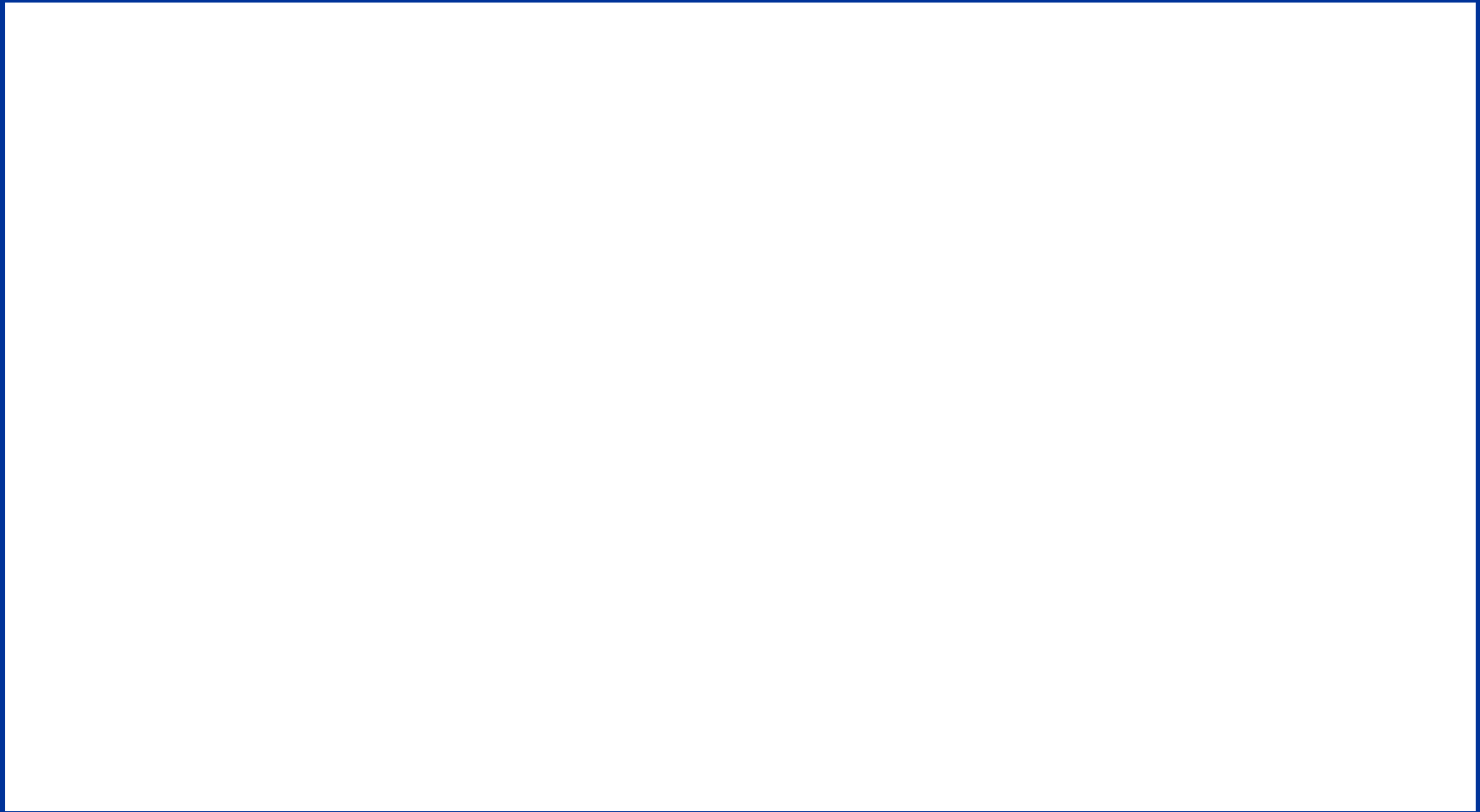


Source: Oklahoma Department of Mental Health and Substance Abuse Services, Regional Performance Management Report, Second Quarter FY 2006.

OKLAHOMA– INITIATION OF S.A. TREATMENT FOLLOWING A FIRST OUTPATIENT SERVICE



Source: Oklahoma Department of Mental Health and Substance Abuse Services, Regional Performance Management Report, Second Quarter FY 2006.



RELATIONSHIP BETWEEN PROCESS AND OUTCOME MEASURES

Washington Circle Measures of Process of Care

- **Initiation**
- **Engagement**

Clinical Outcomes

- **Substance Use**
- **Healthcare Utilization**
- **Employment**
- **Criminal Activity**
- **Family/Social**

Patient Factors

Treatment System Factors

OKLAHOMA DATA

- Oklahoma Department of Mental Health and Substance Abuse Services
 - Admission information on sociodemographics, drug use, prior employment
 - Substance abuse service type and date
- Linked to state criminal justice data
 - Arrest date
 - Incarceration date
 - Driving under the influence date

SELECTION OF CLIENTS FOR ANALYSIS

Collect pre-treatment data on criminal justice involvement

Select clients with new outpatient episodes

Track treatment and criminal justice involvement

2000

2001

2002

ANALYTIC METHODS

- Survival analyses studying time to arrest or incarceration for:
 - 5,163 adult clients beginning a new episode with an outpatient service
- Controlled for:
 - Sociodemographics
 - Prior year arrest or incarceration, employment
 - Specific treatment program
 - Self-reported drug use at admission

DESCRIPTION OF ANALYSIS SAMPLE: WASHINGTON CIRCLE

Washington Circle Measures

No initiation	32 %
Initiation only	17 %
Initiation and engagement	51 %

DESCRIPTION OF ANALYSIS SAMPLE: SOCIODEMOGRAPHICS

Age	
18-20	11%
21-30	36%
31-44	40%
>45	13%
Male	60%
Race	
White	68%
Black	13%
Native American	16%

Education	
<High school	35%
≥High school	65%
Marital Status	
Never married	36%
Married	28%
Divorced/widowed	35%
Homeless	2%

DESCRIPTION OF ANALYSIS SAMPLE: CRIMINAL JUSTICE AND EMPLOYMENT

Prior Year

Arrest or Incarceration 27 %

DUI 14 %

Employed 50 %

Year After Treatment

Arrest or Incarceration 15 %

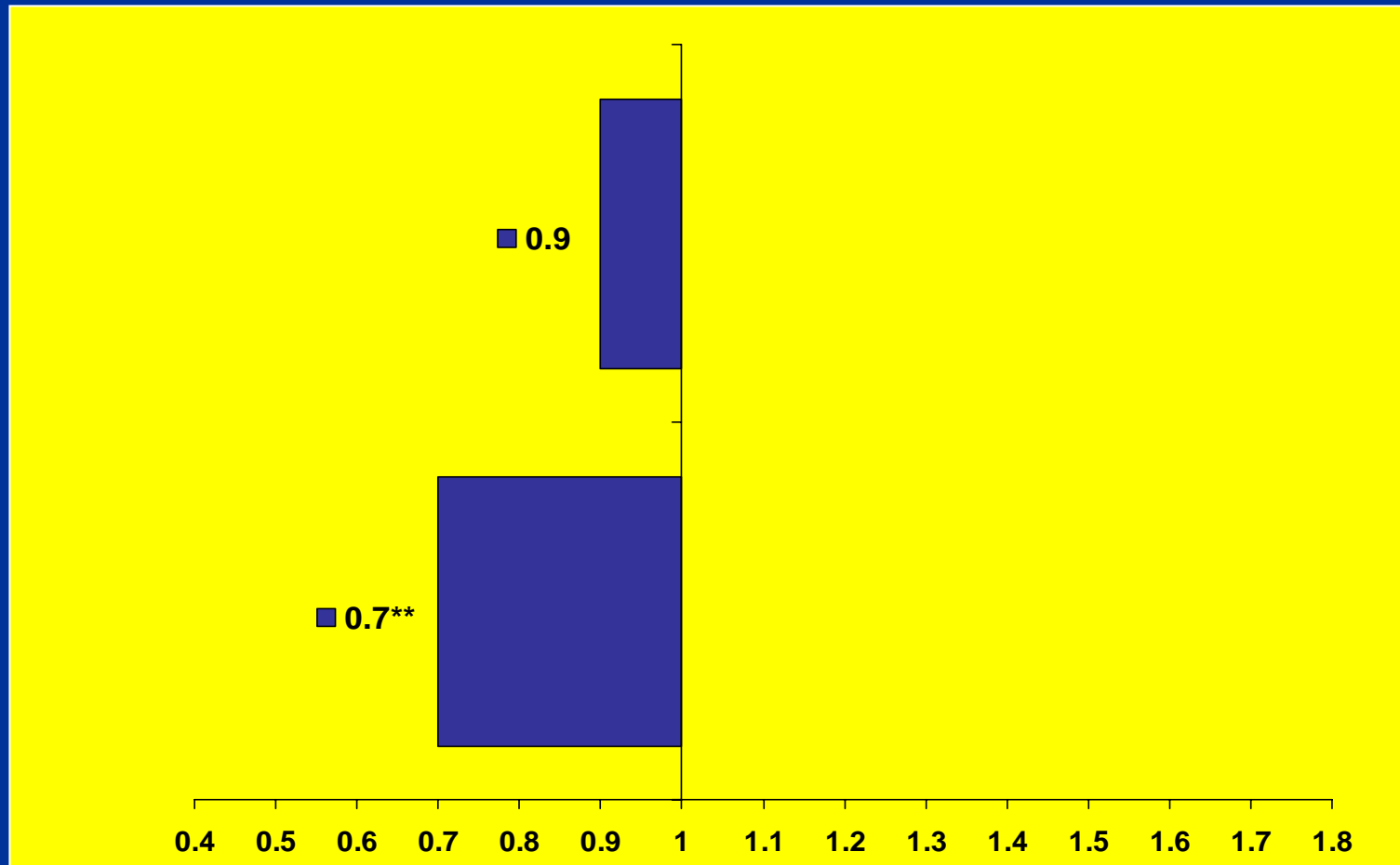
RESULTS – OVERVIEW

- For clients with a new episode of outpatient treatment settings, initiation and engagement in treatment was significantly associated with decreased arrests or incarcerations

RESULTS – WC VARIABLES RELATED TO ARRESTS/INCARCERATION

Initiation only

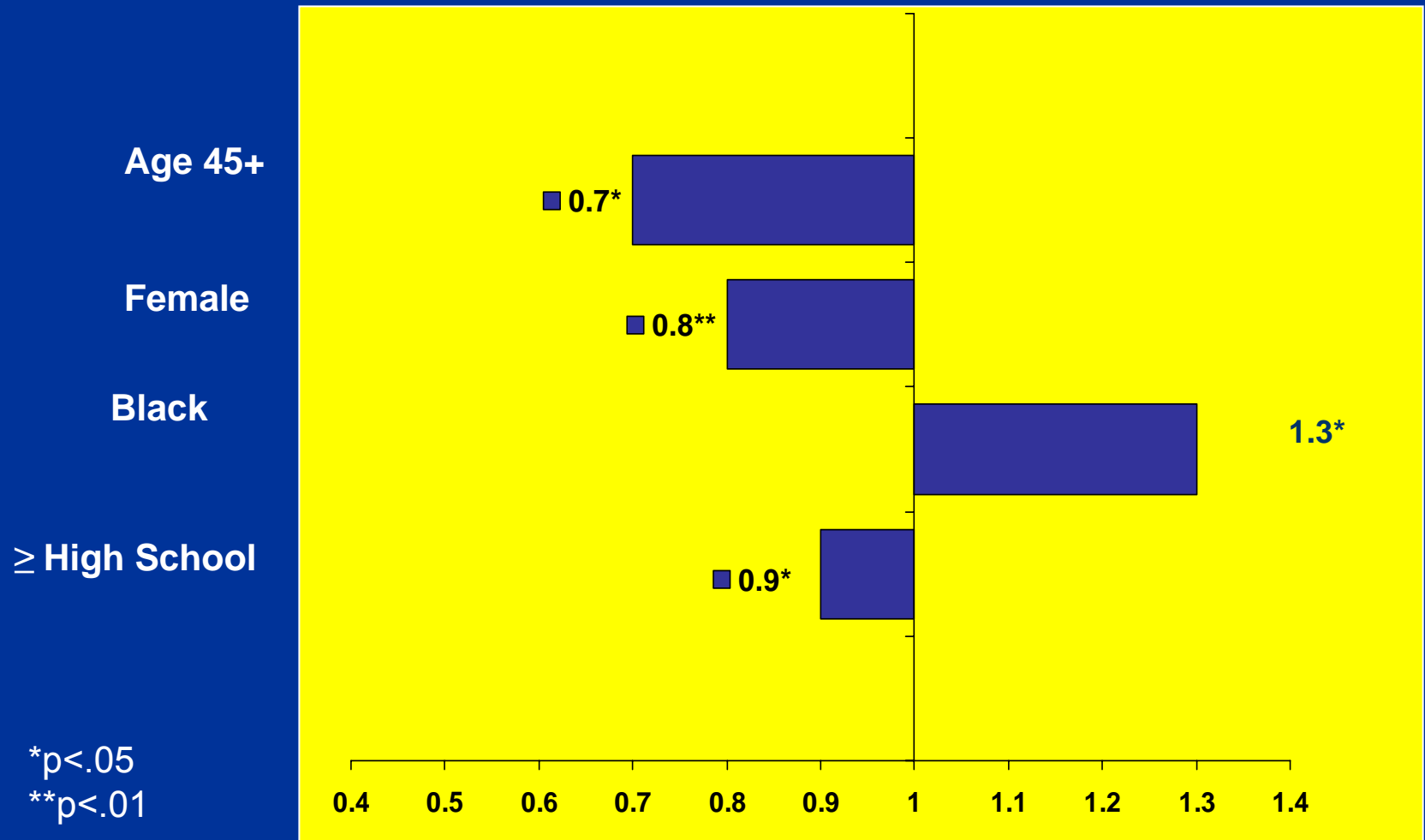
Initiation and Engagement



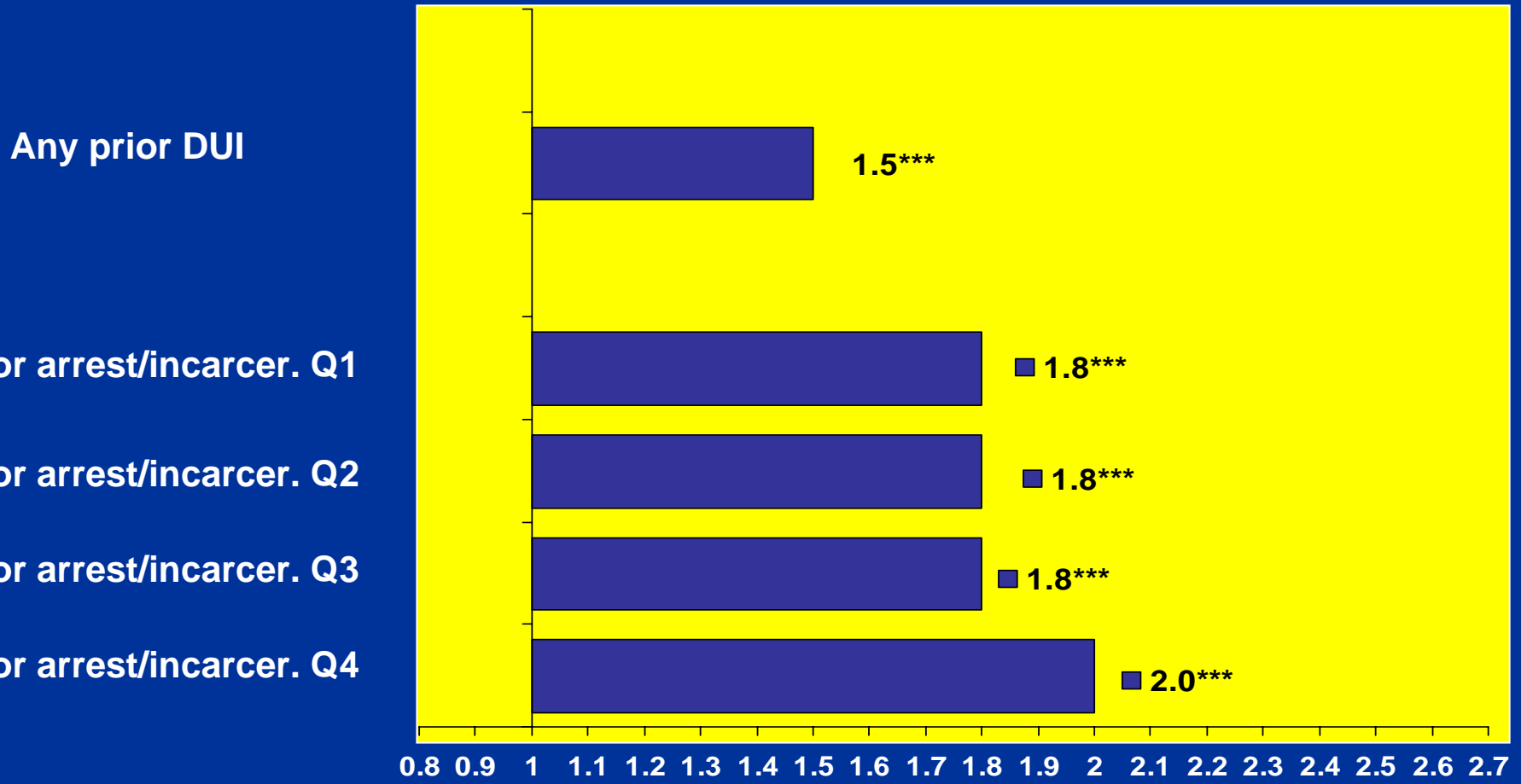
**p<.01

Hazard Ratio

RESULTS – SIGNIFICANT SOCIODEMOGRAPHIC VARIABLES RELATED TO ARRESTS/INCARCERATION



RESULTS – SIGNIFICANT PRIOR CRIMINAL JUSTICE RELATED TO ARRESTS/INCARCERATION



*p<.05, **p<.01, ***p<.001

Hazard Ratio

POLICY IMPLICATIONS

- Initial evidence that adherence to WC performance measure for substance abuse services is associated with lower likelihood of negative criminal justice outcomes
- Support for initiatives to increase engagement in treatment
- Benefit of linking data across state agencies

STATE-LEVEL APPLICATION OF RESEARCH

